

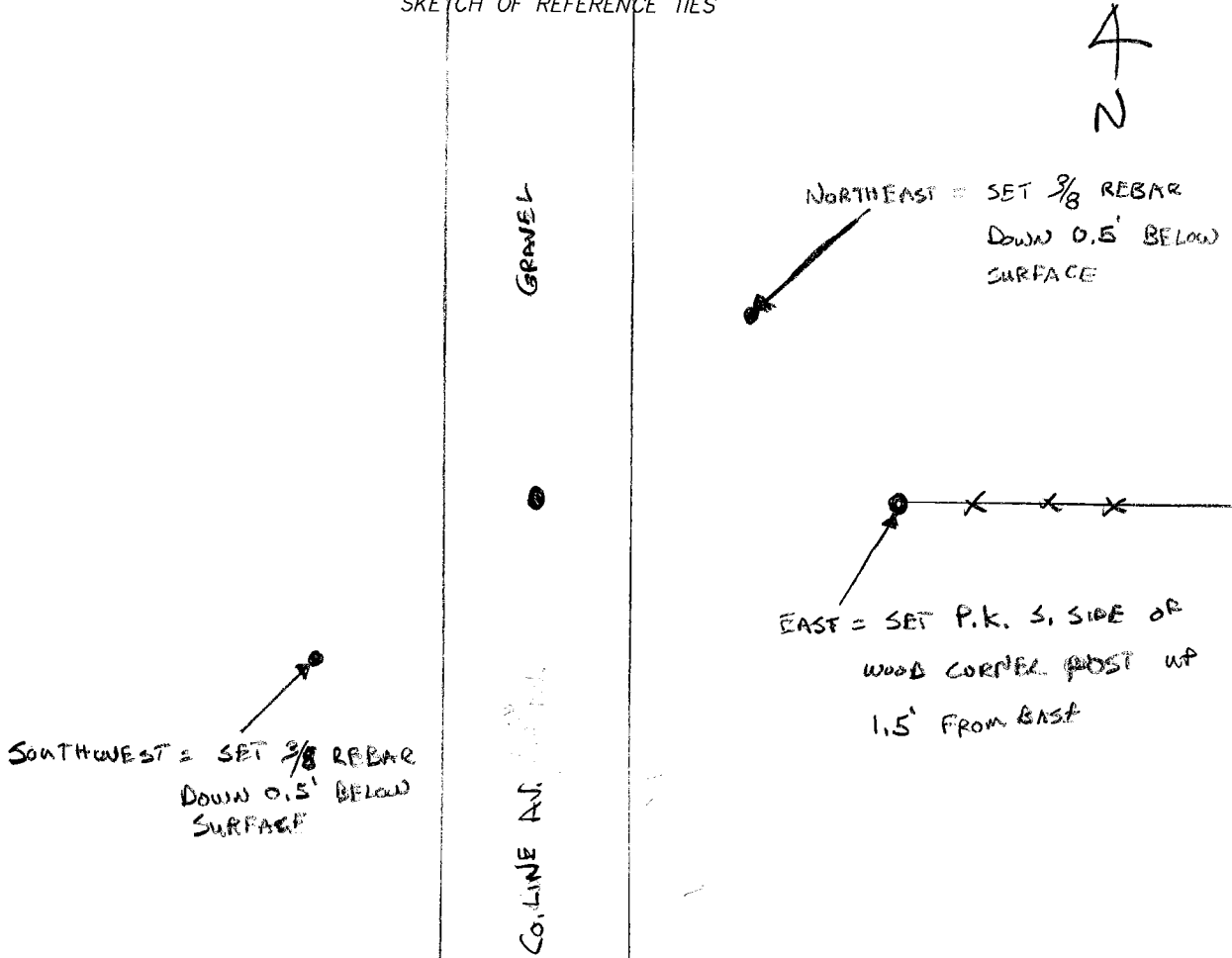
CERTIFICATE OF LOCATION OF GOVERNMENT CORNER

EAST QUARTER Corner of Section 36, Township 108 N, Range 44 W, 5th P.M.
 STATE OF MINNESOTA, County of Pipestone

At the corner location shown on the sketch:

- On _____ found a _____
DATE
- left monument as found, lowered monumnet, removed monument (explain)
- On 7/25/07 placed a 3/8" CAPPED REBAR # 40853 DOWN 0.5' BELOW SURFACE
DATE

SKETCH OF REFERENCE TIES



Statement of evidence relative to this corner location is on back of page.

I hereby certify that this document and the data contained herein was prepared by me or under my direct supervision.

[Signature]
SIGNATURE

Registration No. 40853

- Land Surveyor, Professional Engineer
 County Surveyor, County Engineer

OFFICE OF THE COUNTY RECORDER

County of _____

I hereby certify that this document was filed in the Co. Recorders office at _____ M. on the _____ day of _____ A.D., 20____

County Recorder _____

By _____, Deputy

DOCUMENT NO. _____

Statement of Evidence (E. ¼ cor. Sec. 36, Twp. 108, Rge. 44)

On July 25, 2007, Westwood Professional Services excavated with a backhoe and found no evidence. A 3/8 inch capped rebar was set (PLS 40853) 0.3 feet below grade at the intersection of the existing centerline of the road and the westerly extension of a fence line to the east.